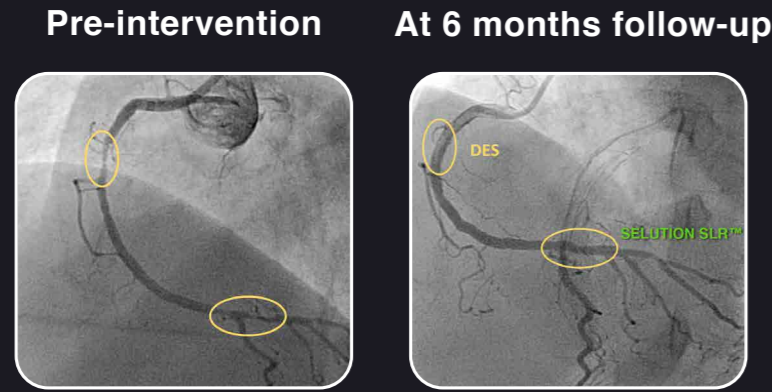


**SELUTION SLR™ drug-eluting balloon (DEB) demonstrates safety and efficacy in First-in-Human coronary study<sup>4</sup> and is designed to deliver similar performance as drug-eluting stents (DES)<sup>5</sup>.**

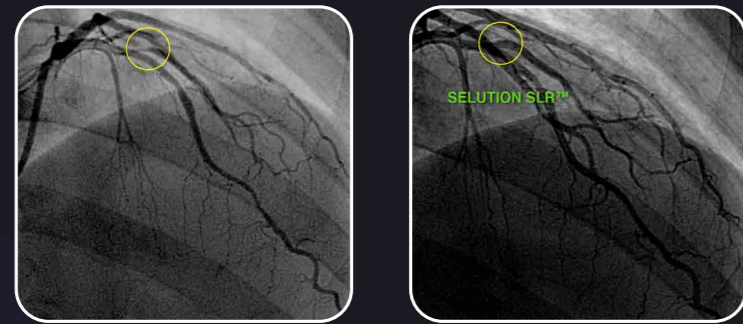
- Primary endpoint - 100% Freedom from device and procedure-related mortality through 30 days.
- Low overall MACE rate of 2% at 12 months.

### Case examples from First-in-Human Coronary Study

#### Hybrid Approach (DES & DEB)



#### Bifurcations



#### Small Vessels



#### In-Stent Restenosis



## Technical Specification



Feature	Specification	Balloon	
Sirolimus Drug Dose	1.0 µg/mm <sup>2</sup>	Nominal Balloon Pressure (NP)	6 bar
Drug Carrier	Cell Adherent Technology (CAT™) Amphipathic Lipid Carrier	Rated Burst Pressure (RBP)	12 bar
Catheter Design	Rapid Exchange (RX)	Balloon Diameters	1.50 mm – 5.00 mm
Catheter Usable Length	140 cm	Balloon Lengths	10, 15, 20, 25, 30, 35, 40 mm
Guidewire Compatibility	0.014"		
Tip Entry Profile	0.016"		
Minimum Guide Catheter Compatibility (Fr)	1.50 – 3.75 mm balloon diameter: ≥ 5 Fr 4.00 – 5.00 mm balloon diameter: ≥ 6 Fr		

## Ordering Information

### SELUTION SLR™ Sirolimus Eluting PTCA Balloon Catheter

Balloon Diameter (mm)	Balloon Length (mm)						
	10	15	20	25	30	35	40
1.50	SC14-150010	SC14-150015	SC14-150020	SC14-150025	SC14-150030	SC14-150035	SC14-150040
2.00	SC14-200010	SC14-200015	SC14-200020	SC14-200025	SC14-200030	SC14-200035	SC14-200040
2.25	SC14-225010	SC14-225015	SC14-225020	SC14-225025	SC14-225030	SC14-225035	SC14-225040
2.50	SC14-250010	SC14-250015	SC14-250020	SC14-250025	SC14-250030	SC14-250035	SC14-250040
2.75	SC14-275010	SC14-275015	SC14-275020	SC14-275025	SC14-275030	SC14-275035	SC14-275040
3.00	SC14-300010	SC14-300015	SC14-300020	SC14-300025	SC14-300030	SC14-300035	SC14-300040
3.25	SC14-325010	SC14-325015	SC14-325020	SC14-325025	SC14-325030	SC14-325035	SC14-325040
3.50	SC14-350010	SC14-350015	SC14-350020	SC14-350025	SC14-350030	SC14-350035	SC14-350040
3.75	SC14-375010	SC14-375015	SC14-375020	SC14-375025	SC14-375030	SC14-375035	SC14-375040
4.00	SC14-400010	SC14-400015	SC14-400020	SC14-400025	SC14-400030	SC14-400035	SC14-400040
4.50	SC14-450010	SC14-450015	SC14-450020	SC14-450025	SC14-450030	SC14-450035	SC14-450040
5.00	SC14-500010	SC14-500015	SC14-500020	SC14-500025	SC14-500030	SC14-500035	SC14-500040

- 1.5. To achieve optimum performance from SELUTION SLR as a possible alternative to DES, follow the Instructions for Use in your deployment procedure, and reference "How to use the drug-eluting balloon: recommendations by the German consensus group", Eurointervention 2011;7:K125-K128
2. MedAlliance is the first drug-eluting balloon (DEB) company in the world to be awarded US Food and Drug Administration (FDA) Breakthrough Device Designation Status.
3. Drug concentration evident in MicroReservoirs and tissue - Data on file at MedAlliance CardioVascular SA.
4. Windecker, S - Oral Presentation TCT 2019.

SELUTION SLR and CAT are trademarks of MedAlliance CardioVascular SA.

© 2023 M.A. Med Alliance SA.

Indication, contraindications and warnings can be found in the instructions for use supplied with each device.  
SELUTION SLR Sirolimus Eluting PTCA Balloon Catheter - CE Mark Approved. Not available for sale in United States.

Legal Manufacturer: MedAlliance Cardiovascular SA, Rue de Rive 5, 1260 Nyon, Switzerland  
T: + 41 22 363 78 90 | E: info@medalliance.com | W: www.medalliance.com



SAM-0004 REV.E

**SelutionSLR™**  
SUSTAINED LIMUS RELEASE  
Sirolimus Eluting PTCA Balloon Catheter



**The New Paradigm  
for Coronary  
Interventions**

# The new Paradigm for Coronary Interventions.

Don't compromise on your treatment standard...  
**SELUTION SLR™** is the latest generation of Drug-Eluting Balloon technology.

- Offering you a greater choice of options for your coronary interventions.
- Designed to deliver the same safety and performance as the best-in-class DES technology<sup>1</sup> with the added benefit of leaving no metal behind.



## Breakthrough<sup>2</sup> Technology to Deliver Sustained Limus Release for up to 90 days<sup>3</sup>



**Cell Adherent Technology (CAT™)** is a proprietary amphipathic lipid technology which binds the MicroReservoirs to the balloon surface, protecting them during balloon insertion and inflation;

- Enhancing drug retention and bioavailability, allowing for a lower drug dose concentration on the balloon surface (1  $\mu\text{g}/\text{mm}^2$ ).
- Optimizing transfer of MicroReservoirs to the tissue and maximizing the cellular uptake of sirolimus.



**MicroReservoirs** form millions of precision-engineered drug delivery systems, combining sirolimus with a biodegradable polymer, achieving consistent and predictable drug release;

- Optimizing MicroReservoir size to achieve a pharmaco-kinetic release profile comparable to the latest generation DES technology.



### Latest Generation of PTCA Balloon

- Offering a broader portfolio for coronary indications with balloon diameters ranging from 1.50 mm to 5.00 mm and lengths from 10 mm to 40 mm.